

QUARANTINES AND LICENSING

Amber Jackson

Idaho Dept of Ag

ABOUT US

Agriculture is Idaho's largest industry; the Dept of Ag is charged with enforcing the Laws and Rules in order to protect our growers, our industry and our future.

Whenever possible the producers are involved in the Rulemaking process in order to best represent their interests.

Example: Nursery License fee



RULES,
RULES,
RULES!

WHAT'S IT ALL FOR?

Invasive species cost the US economy more than \$21 BILLION per year*.

WE WANT YOU TO SUCCEED!

Let us help you grow your business and help us protect your industry.

I'M NOT HERE TO RAIN ON YOUR PARADE.

If I'm delivering bad news it's not because that's how I get my kicks.

EXPORTS TO OTHER STATES AND COUNTRIES

No one seems to want our cooties and we certainly don't want theirs.

What's Growing?

Top Agricultural Products in **IDAHO**

DAIRY PRODUCTS
\$2.35B



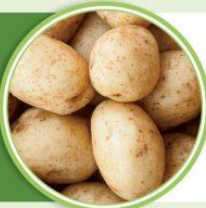
Farm Fact: A dairy cow produces about 6.3 gallons of milk each day and 350,000 glasses of milk in a lifetime.

Farm Fact: A steer typically weighs about 1,000 pounds and yields about 450 pounds of edible meat.



CATTLE & CALVES
\$1.95B

POTATOES
\$878M



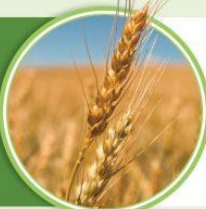
Farm Fact: Packed with potassium, a medium potato with skin provides 18 percent of the recommended daily value per serving.

Farm Fact: Sheep and goats refuse to eat trampled hay, but cows and horses will gobble it up.



HAY
\$440M

WHEAT
\$368M



Farm Fact: A bushel of wheat yields 42 one-and-a-half pound loaves of white bread or 90 one-pound loaves of whole-wheat bread.

Farm Fact: Sugar beets were first recognized as a valuable sweetening plant source in the 1700s.



SUGAR BEETS
\$370M

BARLEY
\$268M



Farm Fact: Barley has the most fiber of all the whole grains. In fact, some varieties contain a whopping 30 percent fiber.

Farm Fact: Americans eat about 8 pounds of beans per person each year, with pinto and navy beans being the most popular.



DRY BEANS
\$93.4M

CHICKEN EGGS
\$66.8M



Farm Fact: U.S. poultry farms provide about 10 percent of the world's egg supply, or 75 billion eggs each year.

Farm Fact: Field corn is different from the corn we eat. Hard and dry, it's used to feed livestock and make ethanol.



CORN
\$60M

Based on 2015 cash receipts according to the U.S. Department of Agriculture Economic Research Service
Excludes stats for "miscellaneous crops" and "all other animal products"



FARM FLAVOR

Visit FarmFlavor.com to learn your state's top agriculture products.

NURSERY LICENSES: WHO NEEDS ONE?

- Farm Stands
- Grocery stores/Moscow Co-Op
- Unlicensed outdoor markets/fairs
- Anyone selling plants (with few exceptions)



CUT FLOWERS

Bouquets
To Florists



PLANT STARTS

Tomatoes
Peppers
Bedding plants



POTTED PLANTS

Shrubs
Perennials
Annuals
Ball & Burlap



BULBS/SEED

Gladiolus
Iris
Dahlias
Any seeds in packets/
Seeds of fruits



NURSERY INSPECTION

SNAKES AND ALLIGATORS...

Things that really don't belong there like Japanese Beetle, invasive snails, and Red Fire Ants.

DISEASES

Sudden Oak Death, Late Blight, White Rot of Alliums,

INVASIVE SPECIES

Scotch Brooms, Cogon Grass, Dyer's Broom, Spanish Broom, Tree Lucerne, Water Hyacinth, etc.

REGULATORY ISSUES

Potatoes without Blue Tags, Grapes without proper certs, Outdated seed, Hops from out of state, etc



SEED POTATOES

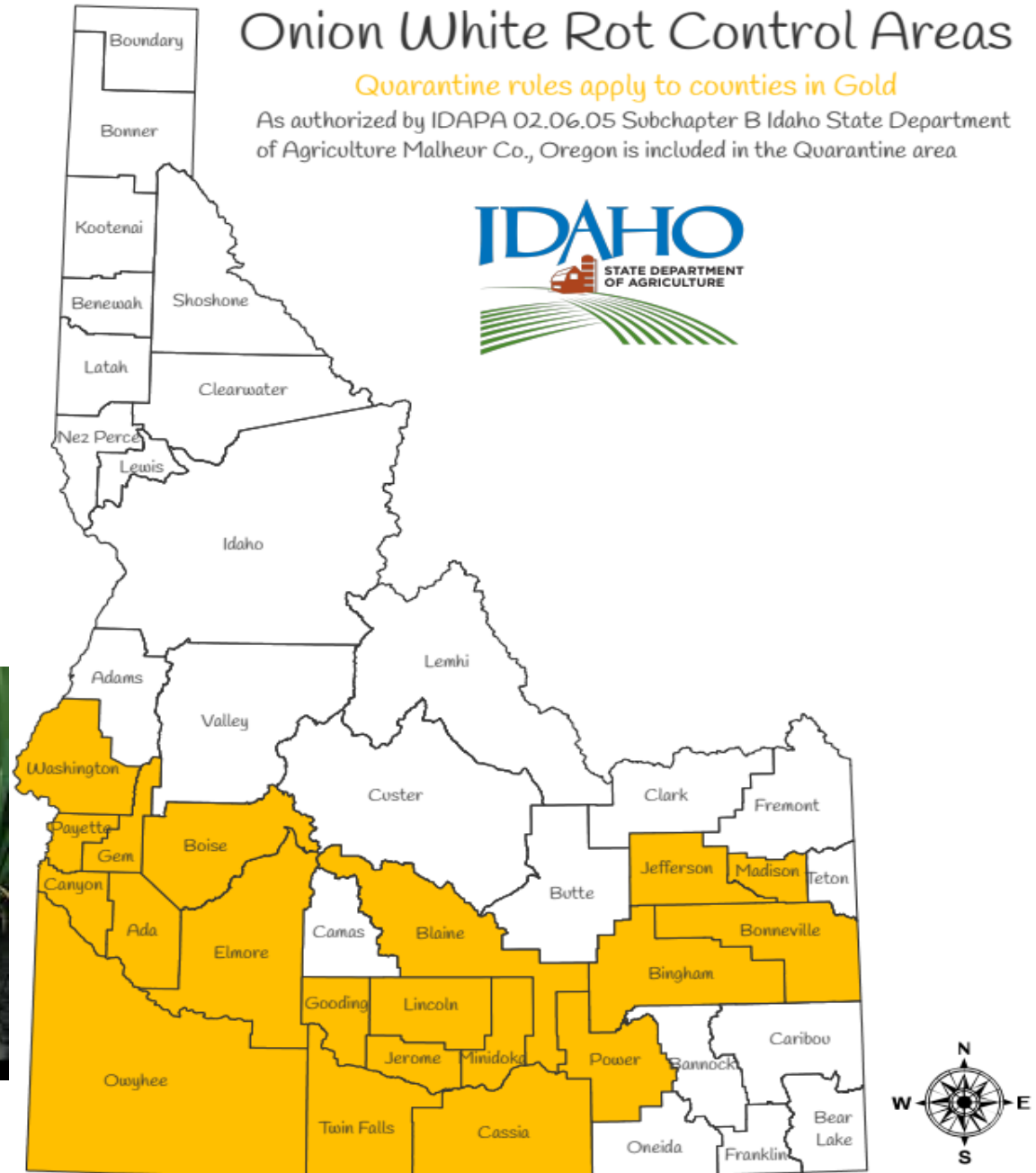
Must be certified seed potatoes.

Must have Blue Tag displayed or it will be stop-saled.

ONIONS AND GARLIC

Onions, ornamental alliums and garlic starts sold for planting may not be sent into the counties shown in gold. Pay attention to those online sales!

There is currently no good treatment for Allium White Rot and the sclerotia will stay in the soil for 15+ years.





FRUIT TREES & SHRUBS

PLUM CUCURLIO

All Malus, Prunus, Cydonia, Pyrus plants, fruits, and soil within the drip line of these plants that have fruited.

PEACH TREES

Must be virus free and certified from a county free of the viruses of concern.

GRAPES

Must be certified free of viruses, bacteria and insects of concern.

MISCELLANEOUS

HOPS

Must be from OR, ID or WA or get a special permit to import.

HEMP

Multitude of regulations,
Ask me for details.

MINT

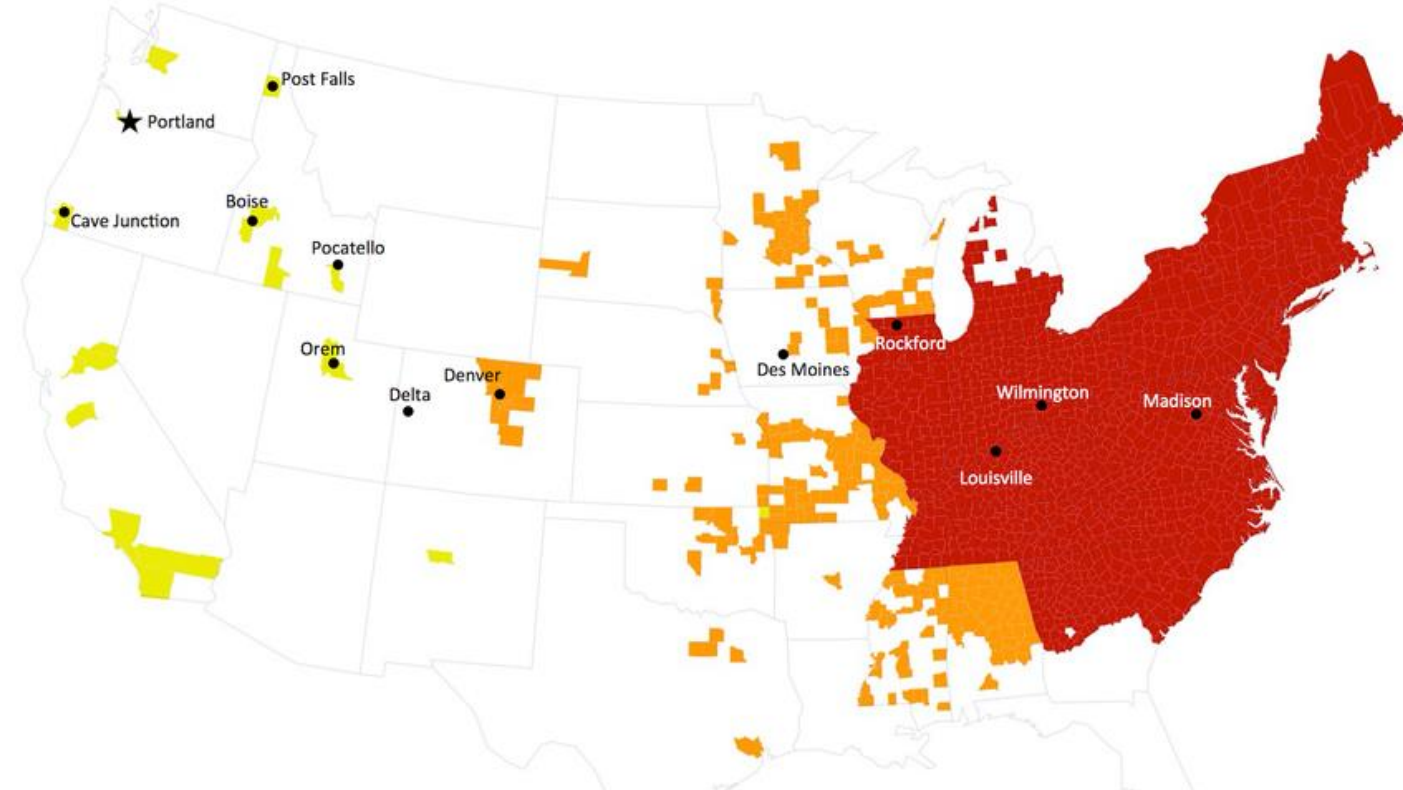
Must be certified free of pests of concern.



JAPANESE BEETLE

Generalist pest is known to feed on 300+ species of plants and the larvae ruin turf grass.

Plant products from the areas in red must meet Idaho's JB Quarantine.





BEES AND APIARIES

*TO CONTROL THE SPREAD OF DISEASE AND EXOTIC STRAINS OF BEES

*50+ COLONIES MUST BE REGISTERED WITH THE STATE
(\$10 AND 0.10 FOR EACH COLONY OVER 50)

*INSPECTIONS TO CERTIFY COLONY HEALTH FOR
MIGRATORY OPERATIONS TO CROSS BORDERS.

*HONEY STANDARDS

SEED DEALERS



LICENSE VS EXEMPT

Exempt: ONLY sells seeds in packets of 8 oz or less.

(One-time application)

License required: Sells seeds in packages of 8 oz or more (or bulk).

Sales of \$500-\$999 gross =\$50 fee

Sales of \$1000+ = \$100 fee

Out of state seed dealers license =\$350 fee

(Annually)

LABELING LAWS

Kind & Variety

Lot number

Origin by state or country

Pure seed %, Inert matter %, Weed seed %, Noxious weed % and kind.

Germination % and date of test

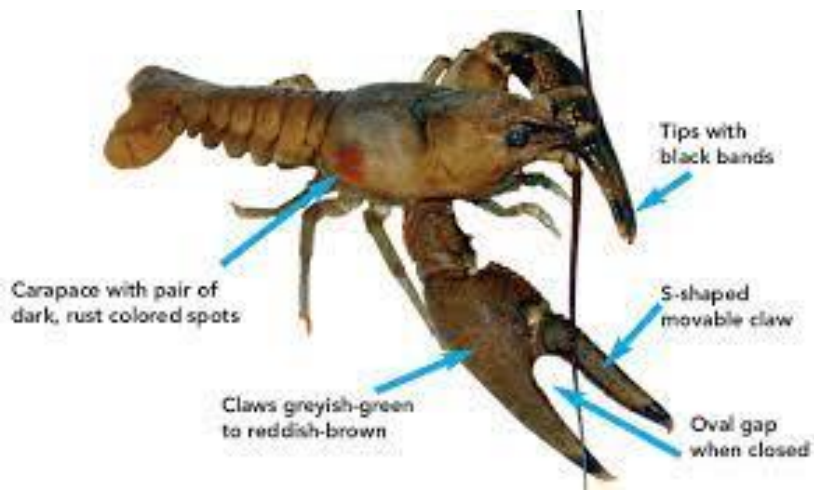
Name and address of seed labeler

Treatment statement

(Must meet germ requirements of IDAPA

02.06.01)

Invasives in the pet trade



HOMEMADE PET TREATS

Homemade pet treats must be registered with the state and labeled according to the regulations that all pet treats abide by.



WE NEED YOUR HELP

We rely on people just like you to spread the word about quarantines and requirements.

Put new producers in touch with us!

Let us know about new producers so that we can proactively reach out to them!



THANK YOU

Amber Jackson

Cell: 208-613-0944

Amber.jackson@isda.idaho.gov

www.agri.idaho.gov

