



University of Idaho
Extension

IAMP

Innovative agriculture marketing partnership

Doug Finkelburg
Joseph Sagers
Erin Brooks
Sanford Eigenbrode



USDA-NRCS NATIONAL FUNDING OPPORTUNITY 2022

- \$3.1 Billion investment by the USDA
- Announced in February 2022
- Application deadline May 2022
- 141 Projects funded



United States Department of Agriculture

Partnerships for Climate-Smart Commodities

Building Markets and Investing in America's Climate-Smart Farmers, Ranchers & Forest Owners to Strengthen U.S. Rural and Agricultural Communities




Fiscal Year (FY) 2022
Partnerships for Climate-Smart Commodities
National Funding Opportunity (NFO)
Number: USDA-NRCS-COMM-22-
NOFO0001139
Assistance Listing No. 10.937

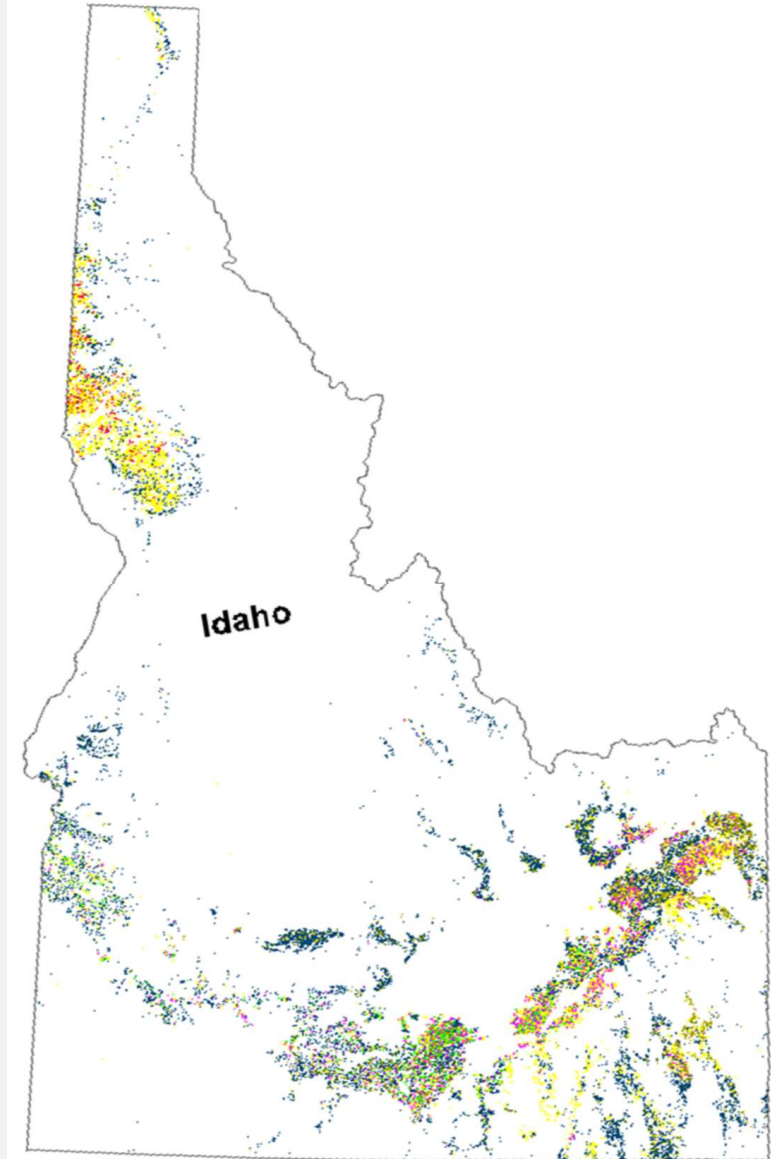
INNOVATED AGRICULTURE AND MARKETING PARTNERSHIP



- \$55 Million in funding
- Implement “Climate Smart” agricultural practices on a large scale
 - 7 Major Idaho commodities
 - Recruit and support producers
 - Reach early adopters, new adopters, underserved producers
- Measurement, Modeling, Reporting, Validating (MMRV)
 - GHG Emissions, Soil Carbon, COMET-Farm model; System Performance
- Develop and expand markets for climate smart commodities
- Improve sustainable productions of Idaho’s major commodities

THE COMMODITIES

Barley	
Beef	
Chickpea	
Hops	
Potatoes	
Sugar Beets	
Wheat	



IMPLEMENTING PARTNERS



University of Idaho - Lead



University
of Idaho

Idaho Association of Soil Conservation Districts

Tribes (Coeur d'Alene, Nez Perce)

The Nature Conservancy, Agriculture Program,
Boise



Desert Mountain Grass Fed Beef

Arrowleaf Consulting

TNC 



SUPPORTING PARTNERS

Commissions and Cooperatives

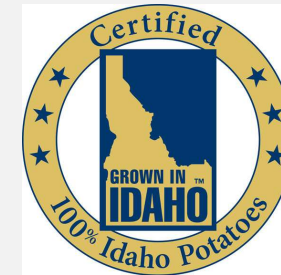
Idaho Barley Commission
Idaho Brewers United
Idaho Potato Commission
Idaho Wheat Commission
Montana Seed Potato Certification
Potato Sustainability Alliance
Potatoes USA

Federal

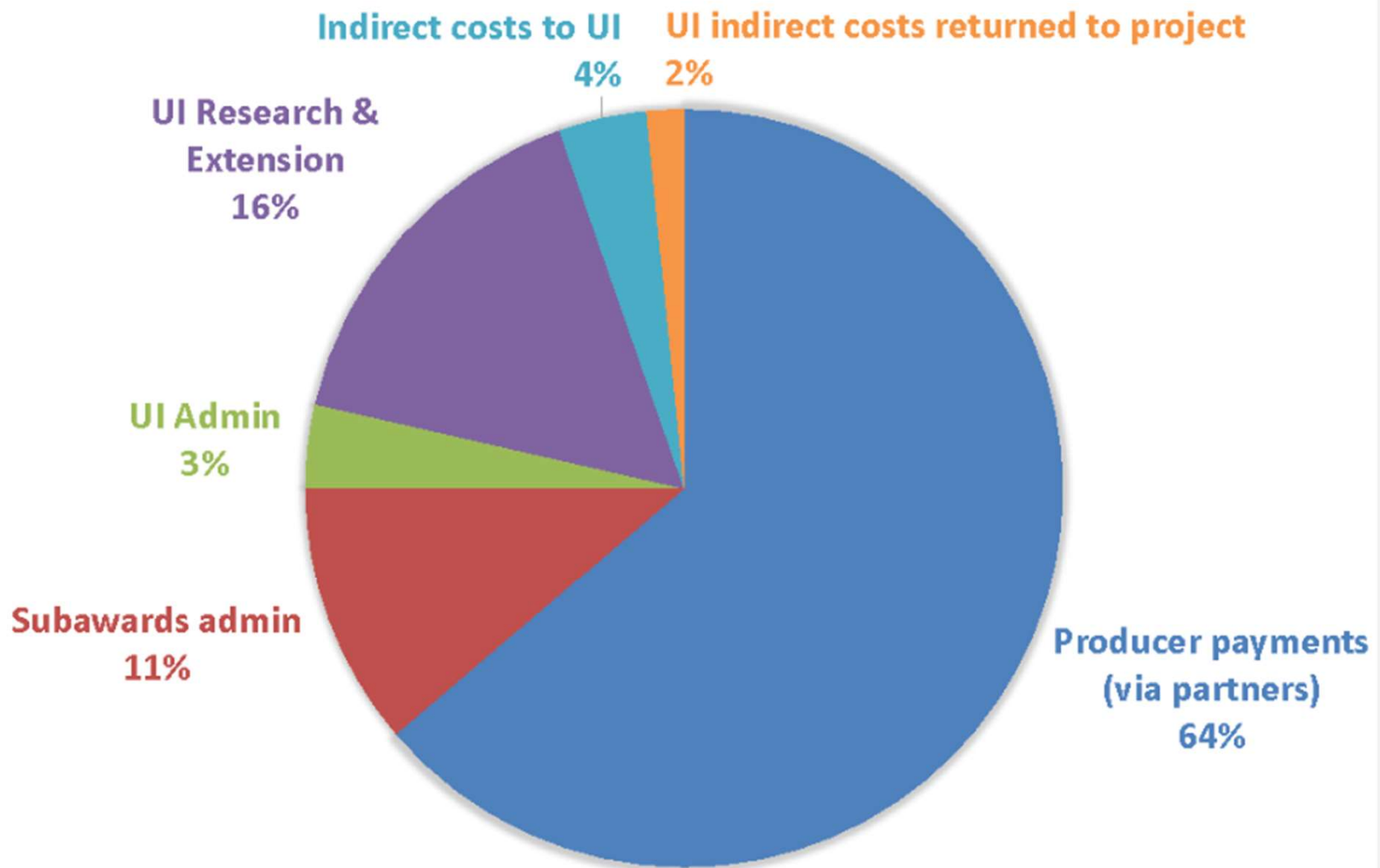
USDA-ARS (Pullman and Kimberly)
USDA-NRCS
USDA-Climate Hub

Industry

Amalgamated Sugar
Anheuser Busch
Hillside Grains
JR Simplot
Magic Valley Produce
Mart Produce
McCain Foods
Zacca Hummus



WHERE IS THE MONEY GOING?





NRCS CODED PRACTICES



- Conservation crop rotation (328)
- Interseeding practices (one or more codes)
- Cover cropping (340)
- Reduced-till (345) and No-till (329)
- Nutrient Management (590)
 - Reduced inputs
 - Composted manure supplements
- Soil Carbon amendment (808), biochar
- Prescribed grazing on CS fields (528)

Based on an enrolled 100,000 acres, COMET-Farm estimates >60,000 tonnes eCO₂ reduced/annually



PRODUCER AGREEMENTS

Incentives

Farmland:

- \$50/acre/year/practice (average)
- Practice stacking supported
- Full rotations: 3 years +
- Payments tied to verification

Cattle:

- For grazing on ground implementing CS practices
- \$1 per head per day

Contracts

- Implemented by the 5 partners
- Approx. 200 farms/ranches statewide



DATA COLLECTED

- Seasonal soil carbon and nutrient measurements from the top 2 ft
- Automated GHG chamber measurements at benchmark sites and 24 Tier 1 farms



G2508 Gas Concentration Analyzer
Measures N₂O, CH₄, CO₂, NH₃, and H₂O





OUTREACH AND EXTENSION

- Workshops, field days and other outputs
- Web site with and data input capacity
- Provision of technical support
- Surveys and focus groups
- Economic analyses and enterprise budgets



THE OPPORTUNITY FOR IDAHO AGRICULTURE



1. Address Declining Soil Health

Soil pH, reduced organic matter, declining soil water retention, decreased soil infiltration

Diversify cropping system: Explore Cover Cropping, Grazing of cover crops, Intercropping

2. Reduce reliance on synthetic fertilizers

Increased reliance on soil organic sources (e.g. manure, compost, organic matter)

Reduce vulnerability to volatile fertilizer prices

3. Increased number and diversity of commodity markets

More access to local and regional markets, increased communication

4. Sustain and Grow Idaho Agriculture for the Next Generation





THE OUTCOMES

1. Adoption of Climate Smart practices that help mitigate greenhouse gas and improve soil health.
2. Knowledge of how these practices impact the farming system
3. New and strengthened supply chains for Idaho commodities
4. New educational materials on Climate Smart practices and farming systems
5. Improved greenhouse gas and soil C storage estimates for Idaho's farming systems
 - COMET-Farm and other model parameterized for Idaho
6. Leveraging opportunities for additional funding to support Idaho's agriculture and food industries

INNOVATIVE AGRICULTURE AND MARKETING PARTNERSHIP

A public, private, tribal partnership building climate-smart markets and increasing the adoption of climate-smart practices in Idaho.



About the IAMP Idaho Project

- IAMP Idaho is a public, private, tribal partnership building climate-smart markets and increasing the adoption of practices to reduce greenhouse gas emissions on more than 200 farms in Idaho through the provision of financial and technical assistance to producers.
- Total funding: \$55 million
- Contracts to producers: \$36 million
- Traditionally underserved producers: 30%
- Commodities: barley, beef, chickpeas, hops, potatoes, sugar beets and wheat.
- Implementing partners: University of Idaho, Coeur d'Alene Tribe, Nez Perce Tribe, Idaho Association of Soil Conservation Districts, The Nature Conservancy, Desert Mountain Grassfed Beef, Arrowleaf Consulting.



University of Idaho

Innovative Agriculture and
Marketing Partnership

Frequently Asked Questions

What is Climate Smart Agriculture?

Climate smart agriculture aims to enhance the capacity of the agricultural systems to support food security, incorporating the need for adaptation and the potential for mitigation into sustainable agriculture development strategies.

Who is Eligible To Participate?

Farmers and ranchers of Idaho's major commodities located anywhere in the state are eligible to apply.

How Can Farmers & Ranchers Get Involved?

The program aims to enroll 200 farmers and ranchers who may contact funded partners to enroll. Funded partners include the Idaho Association of Soil Conservation Districts, the Coeur d'Alene and Nez Perce tribes, the Nature Conservancy and Desert Mountain Beef.

What Resources Are Available To Help Me Implement These Practices?

Funded partners will provide technical expertise and site visits for participating producers. University of Idaho Extension will produce educational materials and bulletins. An online dashboard and portal will share research findings about climate smart practices through text, video, audio and interactive resources.

How Much Will The Program Pay Farmers & Ranchers?

Average program payments are estimated at \$60 an acre dependent on the crop and the practice involved. Some combinations of crops and practices will pay more, and some will pay less.



HOW TO GET INVOLVED

- Questions and ideas? Please email: iamp@uidaho.edu
- Stay tuned to our web page for news. iamp.uidaho.edu
- Producer applications opening as soon as we are able.

